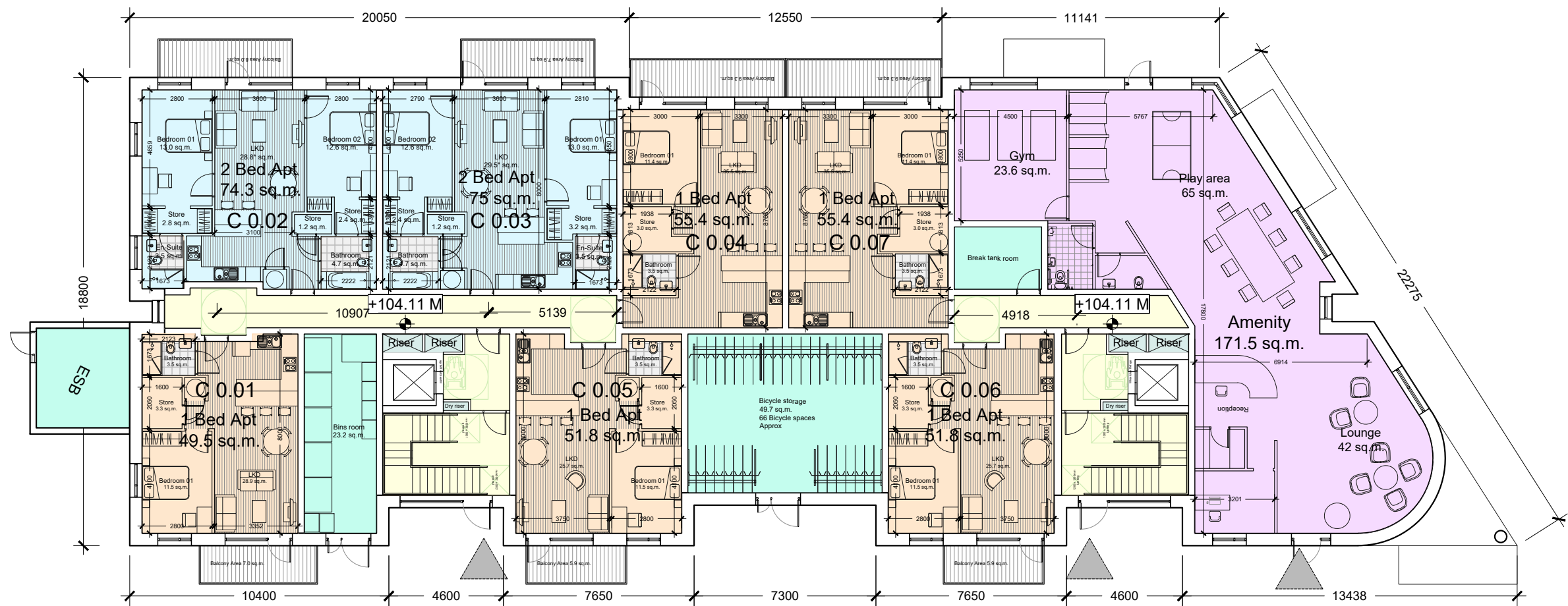


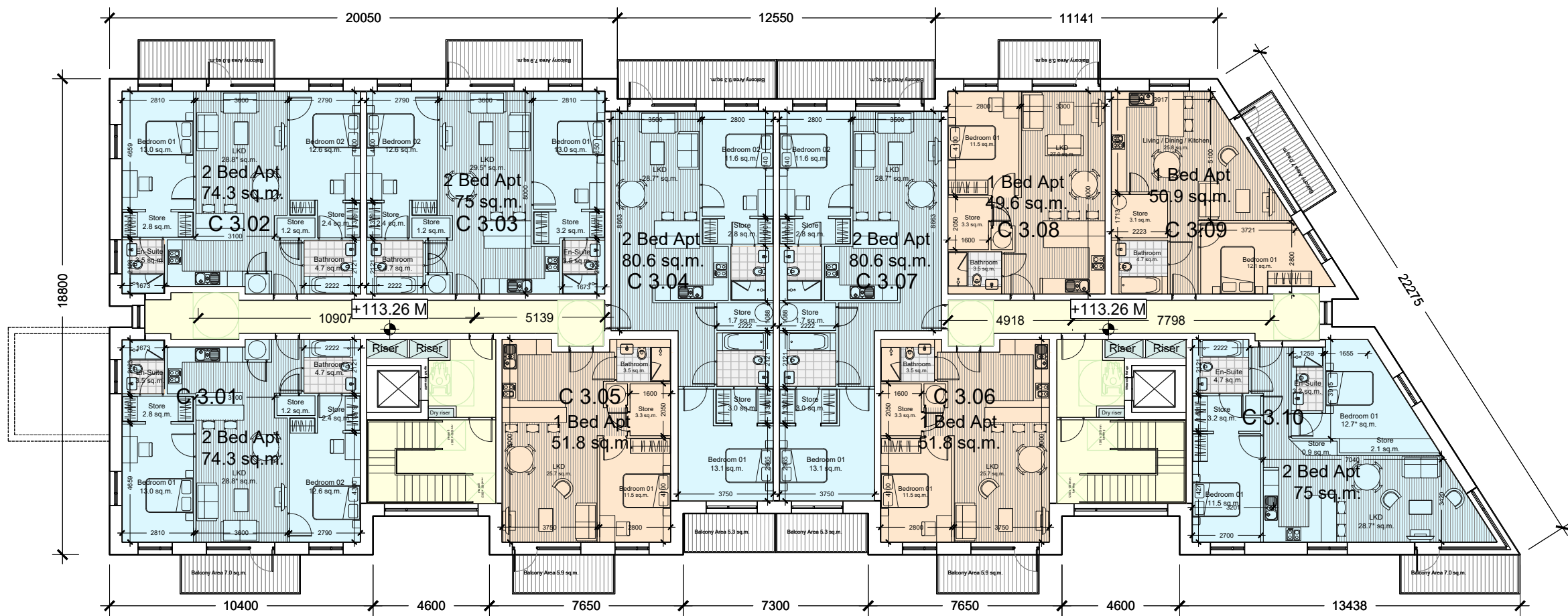


- GENERAL NOTES
1. COPYRIGHT RESERVED
  2. DO NOT SCALE DRAWING. USE FIGURED DIMENSIONS ONLY.
  3. ALL DISCREPANCIES TO BE REPORTED TO ARCHITECT
  4. THE CONTRACTOR IS RESPONSIBLE FOR CHECKING ALL LEVELS AND DIMENSIONS
  5. ALL STRUCTURE TO BE TO STRUCTURAL ENGINEERS DETAILS
  6. ALL MECH & ELEC SERVICES TO SERVICES ENGINEERS DETAILS
  7. ALL PROPRIETARY ITEMS TO BE INSTALLED IN ACCORDANCE WITH MANUFACTURERS INSTRUCTIONS
  8. CONTRACTOR IS RESPONSIBLE FOR THE COORDINATION OF STRUCTURE FINISHES AND SERVICES

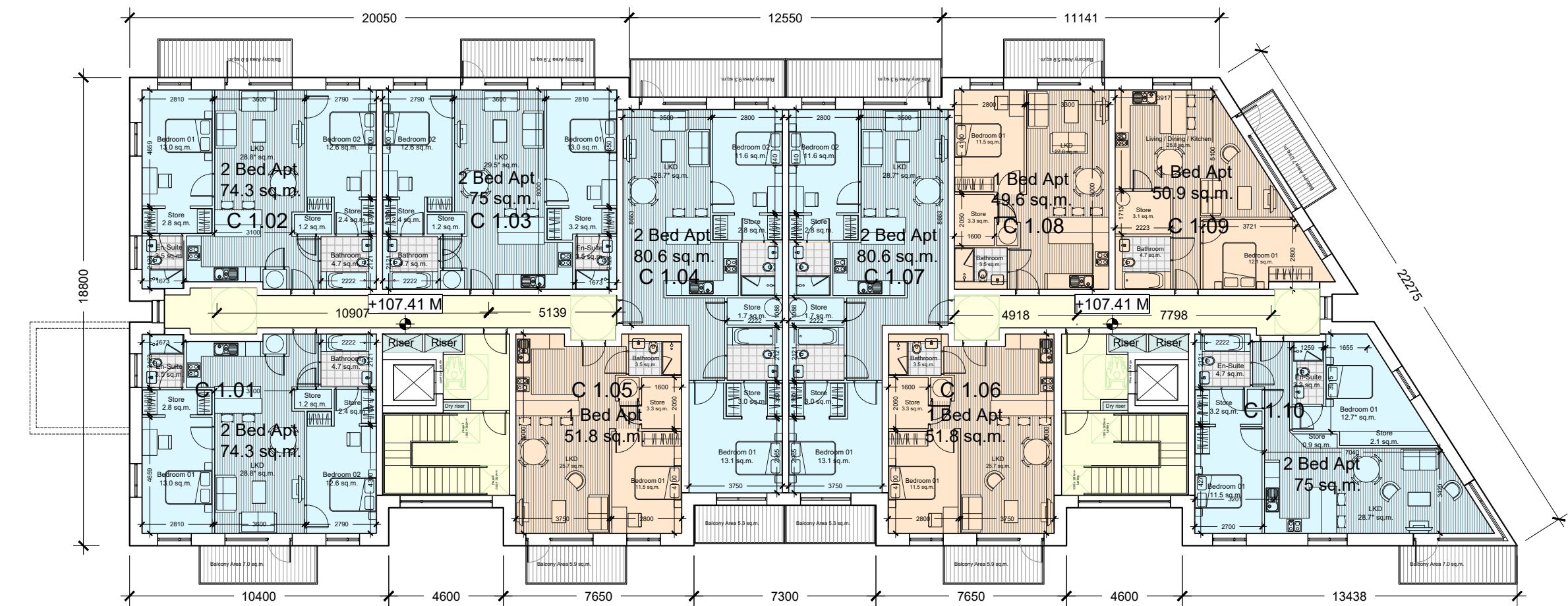
REV	DATE	DESCRIPTION	BY



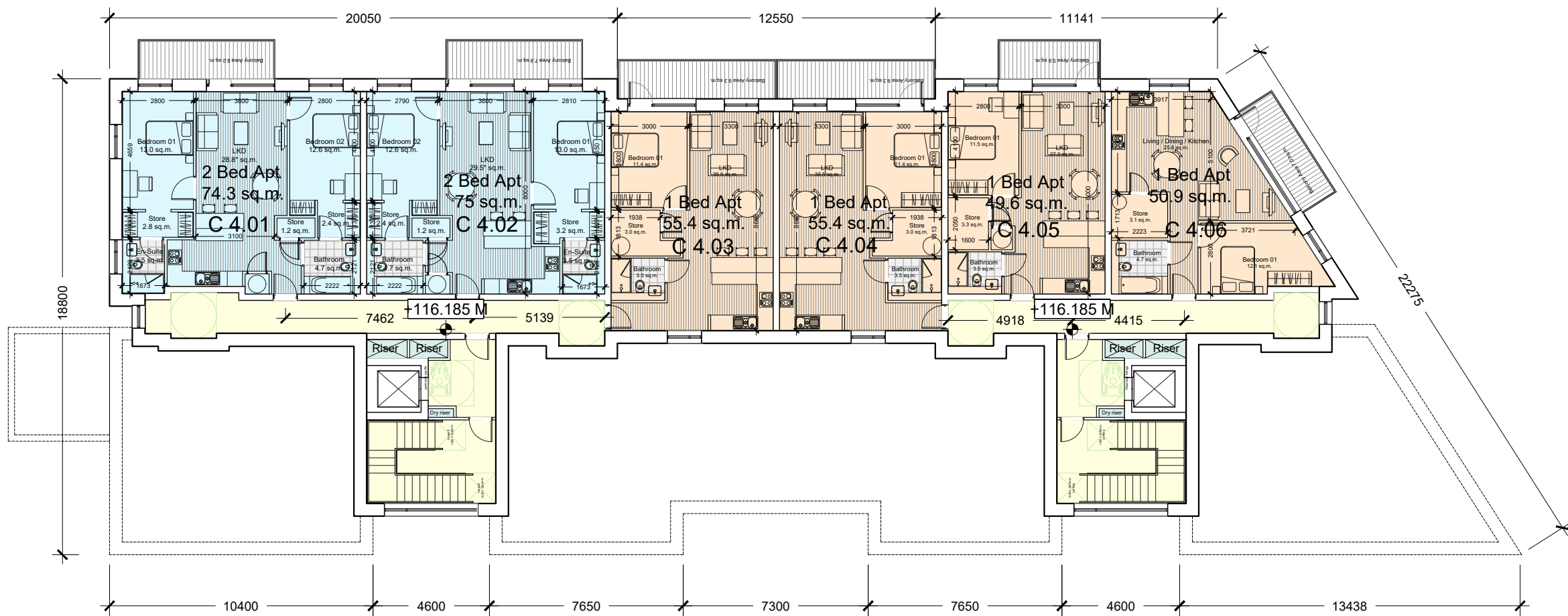
Block C\_Ground floor plan  
Scale 1:200 @ A1



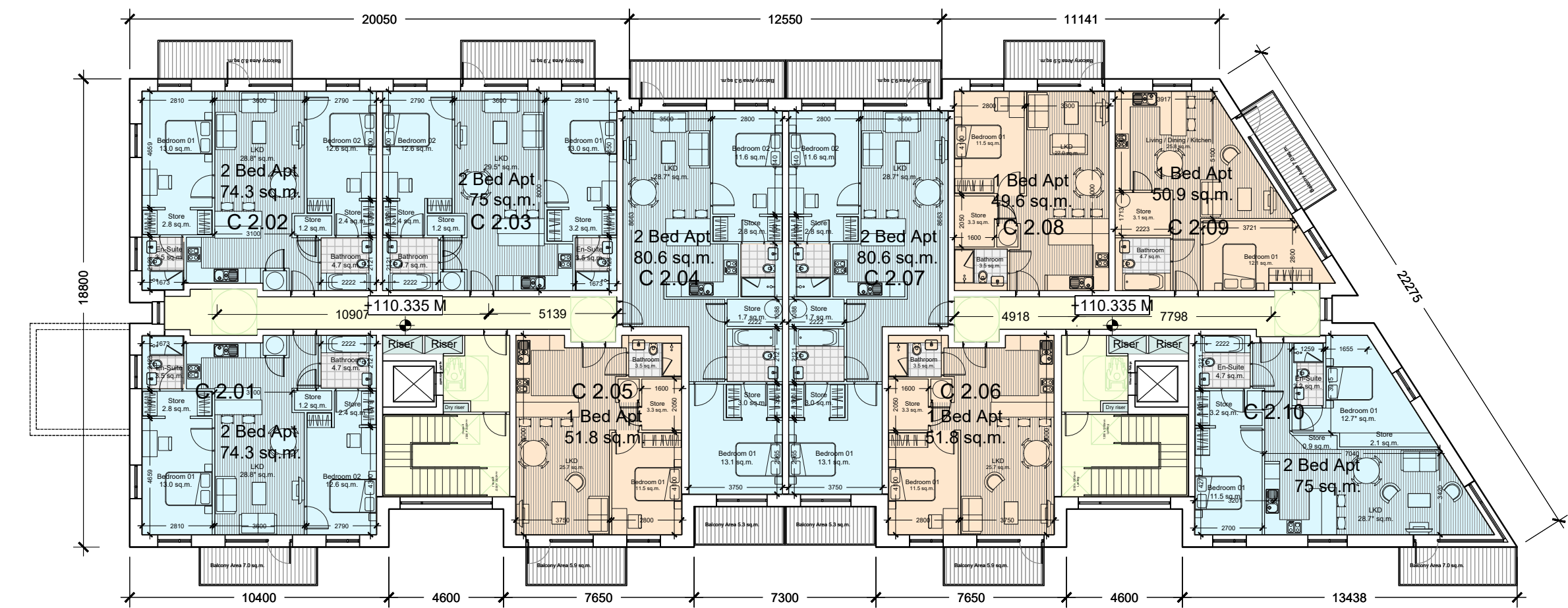
Block C\_Third floor plan  
Scale 1:200 @ A1



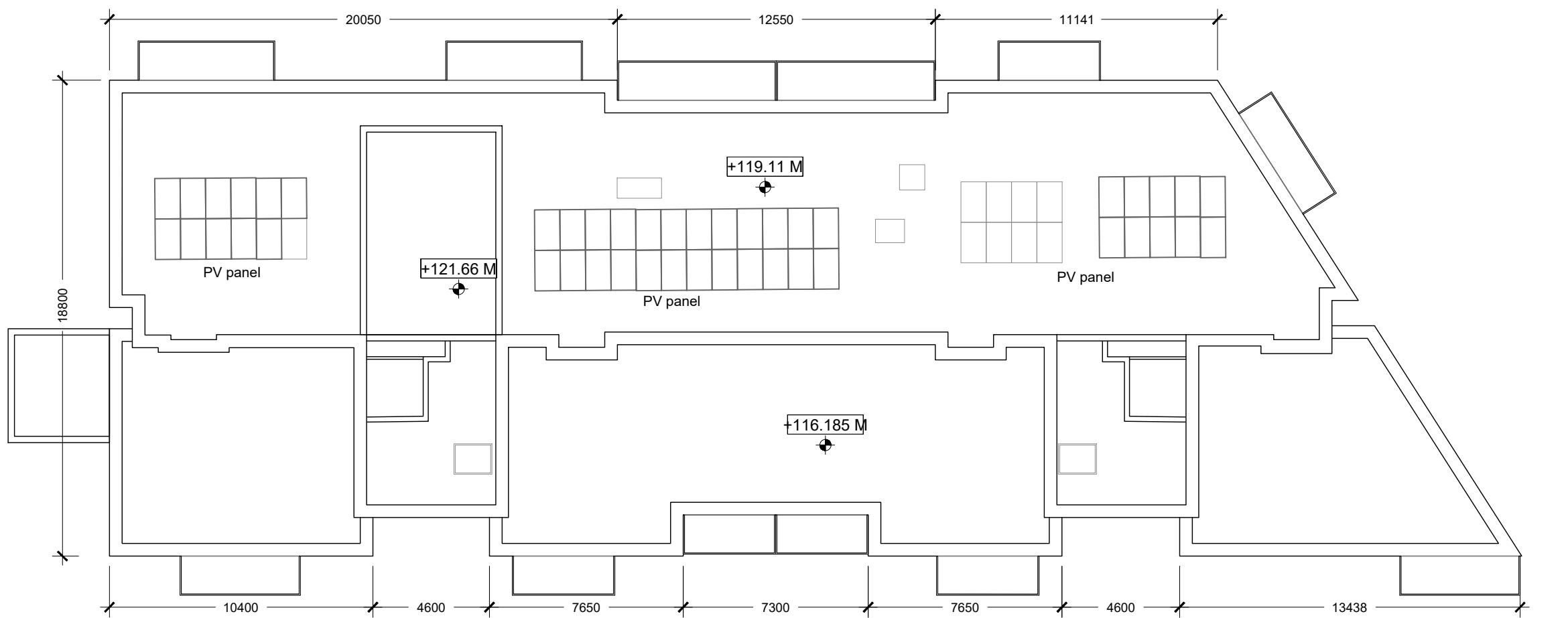
Block C\_First floor plan  
Scale 1:200 @ A1



Block C\_Fourth floor plan  
Scale 1:200 @ A1

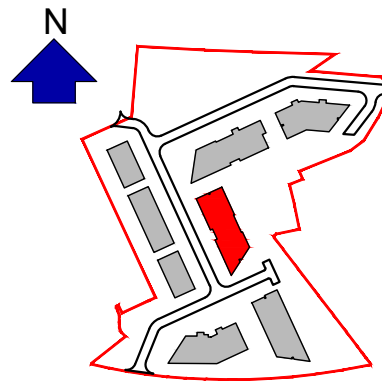


Block C\_Second floor plan  
Scale 1:200 @ A1



Block C\_Roof plan  
Scale 1:200 @ A1

- One bed apartment
- Two bed 4 person apartment
- Circulation
- Storage & Services
- Community space (Block A)
- Amenity area (Block C)



Keyplan



**JOHN FLEMING  
ARCHITECTS**

The Tree House  
17 Richview Office Park, DUBLIN 14.  
T: (01) 6689888 E: info@jfa.ie W: www.jfa.ie

CLIENT  
Ardstone Homes Ltd.

PROJECT  
White Pines East SHD  
Stocking Ave

DRAWING  
Apartment Block C  
Floor plans ALL

SCALE  
1:200@A1  
DRAWN BY  
DATE  
DRAWING NUMBER  
WPE-JFA-XX-AC-DR-A-P2003

DRAWING LOCATION  
w:\103 jobs\10103-planning\3.1-planning-application\3.1.2-and-book.c

DRAWING STATUS  
Planning

